



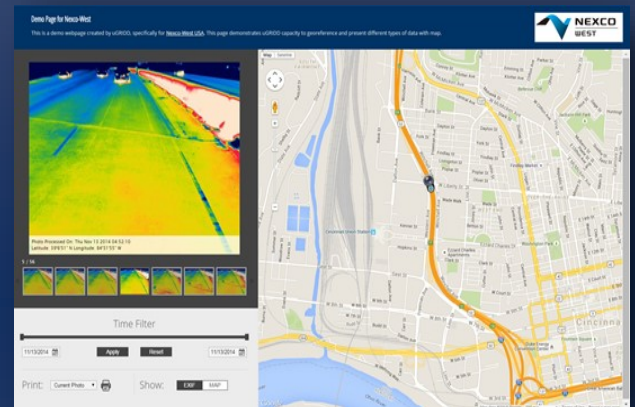
PennDOT Infrared Bridge Deck Scanning

SUMMARY

In 2015, NEXCO-West USA worked with Pennsylvania's DOT to demonstrate the practical usage of infrared technology. The purpose of this project was to use infrared thermography to diagnose the condition of nine bridge decks which are part of Route 283 in Lancaster, PA.

By using NEXCO's Deck Top Scanning System (DTSS), cracks, spalls, patches, and even delaminations could be found. A summary reporting the data collection methods, testing conditions, summary of test results, test data, delaminated/spalled/patched area quantities, and plan area figures of each bridge deck was developed and presented to the DOT.

NEXCO aimed to highlight the advantages of using infrared as an efficient tool of non-destructive inspection over large areas while also providing accurate information about concrete surface conditions. Furthermore, this project was an ideal application of the system because many bridges in close proximity were scanned in the same day.



OVERVIEW

Client:

PennDOT
SAI Consulting Engineers, Inc

Contact info:

Mr. Michael D. Newman
MNewman@saiengr.com
(412-392-8750)

Contract amount:

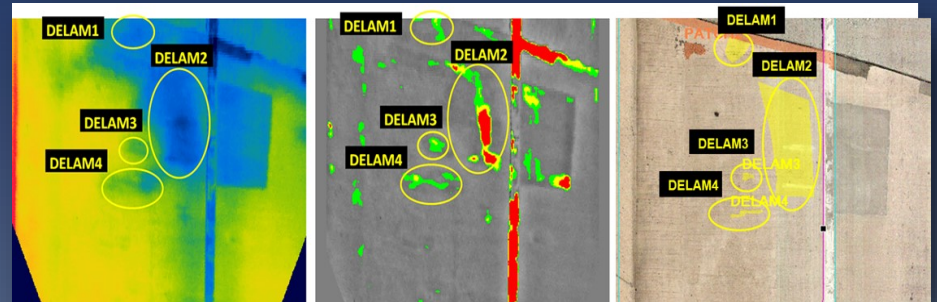
\$ 3,000-\$6,000

Quantity:

The total deck area is
34,869 sqft.

Project period:

Apr. 2015 - Jun. 2015



Original Infrared Data Processed Infrared Data High Resolution Visual Data

NEXCO - West USA

8300 Boone Blvd. Suite 260

Vienna, VA 22182

+1 (703) 734 - 0281

info@w-nexco-usa.com

www.w-nexco-usa.com